



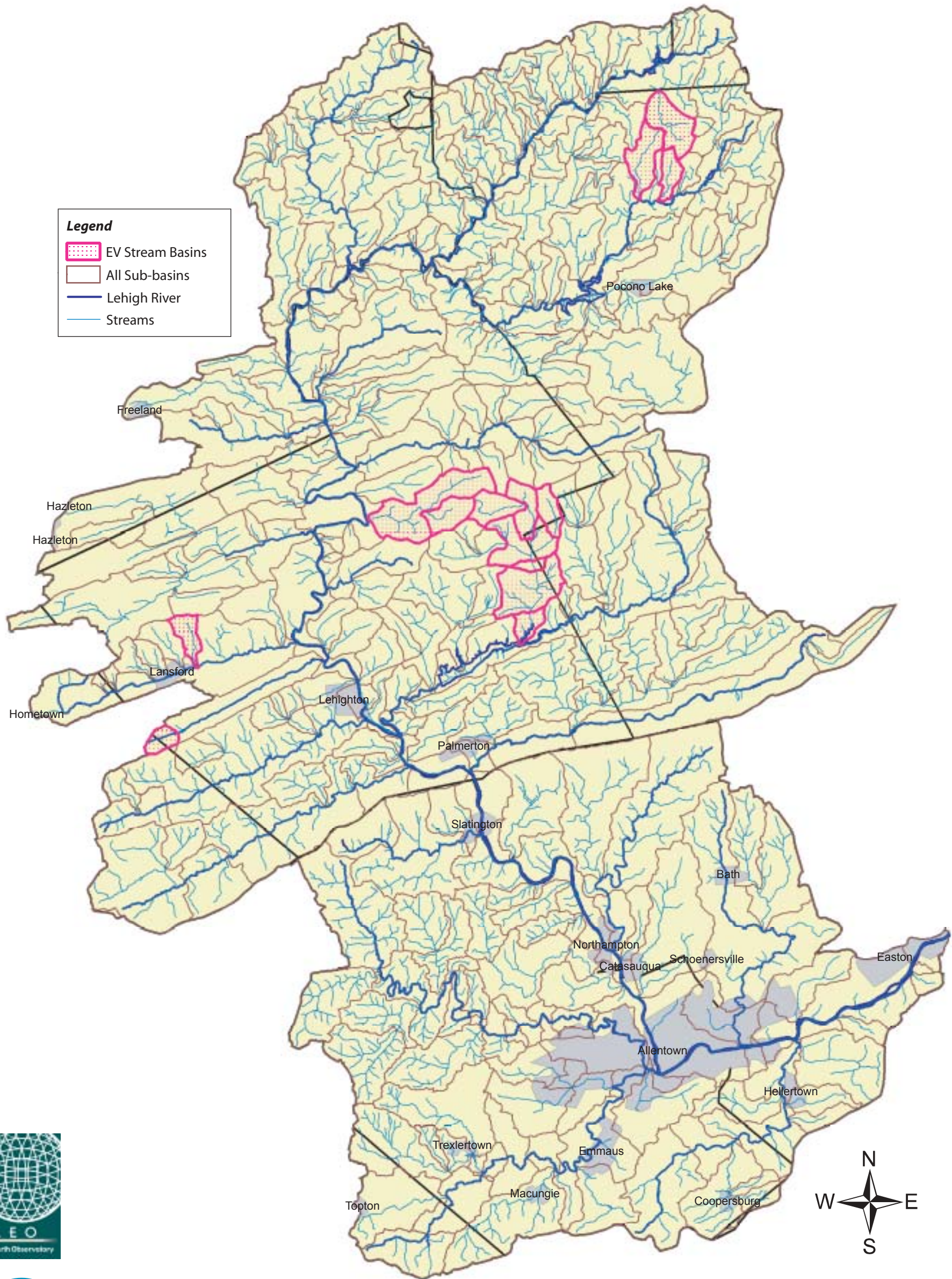


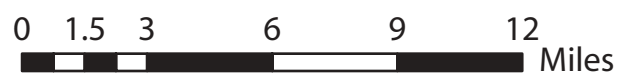
MAP 10-1 EXCEPTIONAL VALUE (EV) STREAM BASINS LEHIGH RIVER WATERSHED

Legend

-  EV Stream Basins
-  All Sub-basins
-  Lehigh River
-  Streams

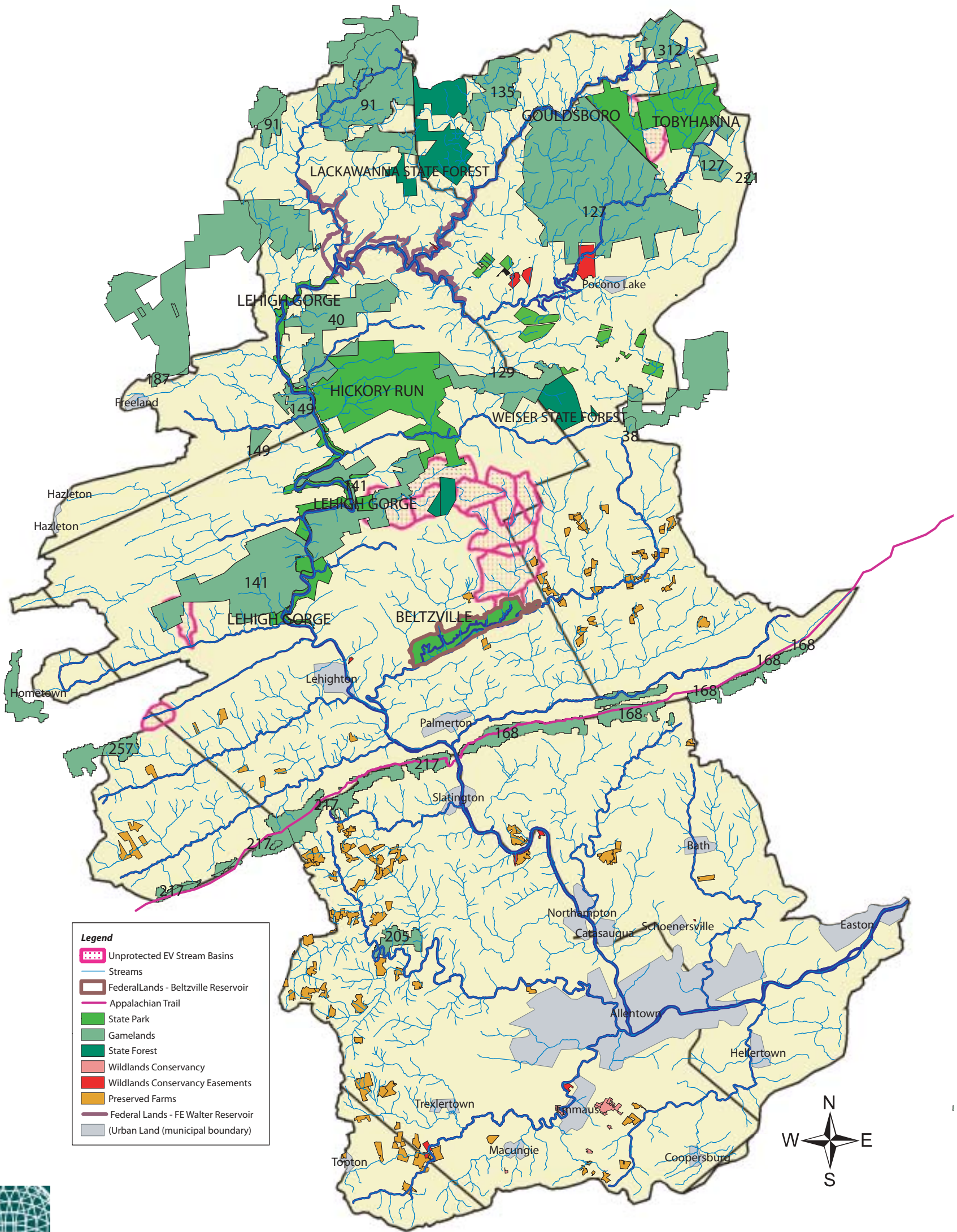


Source: 025 Pa. Code 93.9d. Drainage List D

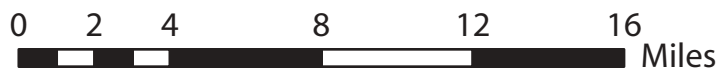


MAP 10-2 PRIORITY LANDS FOR PROTECTION - UNPROTECTED EXCEPTIONAL (EV) VALUE STREAM BASINS

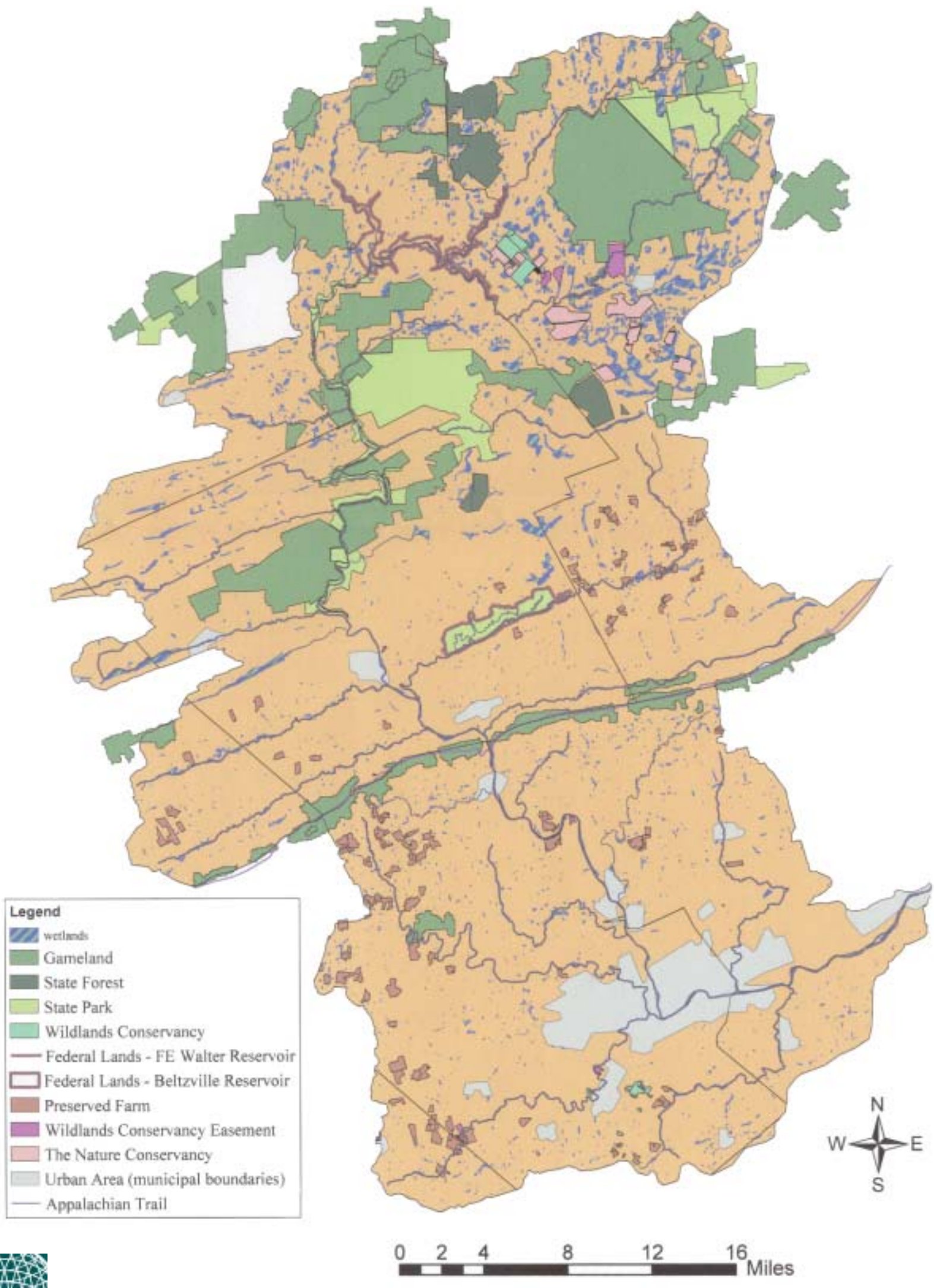
LEHIGH RIVER WATERSHED



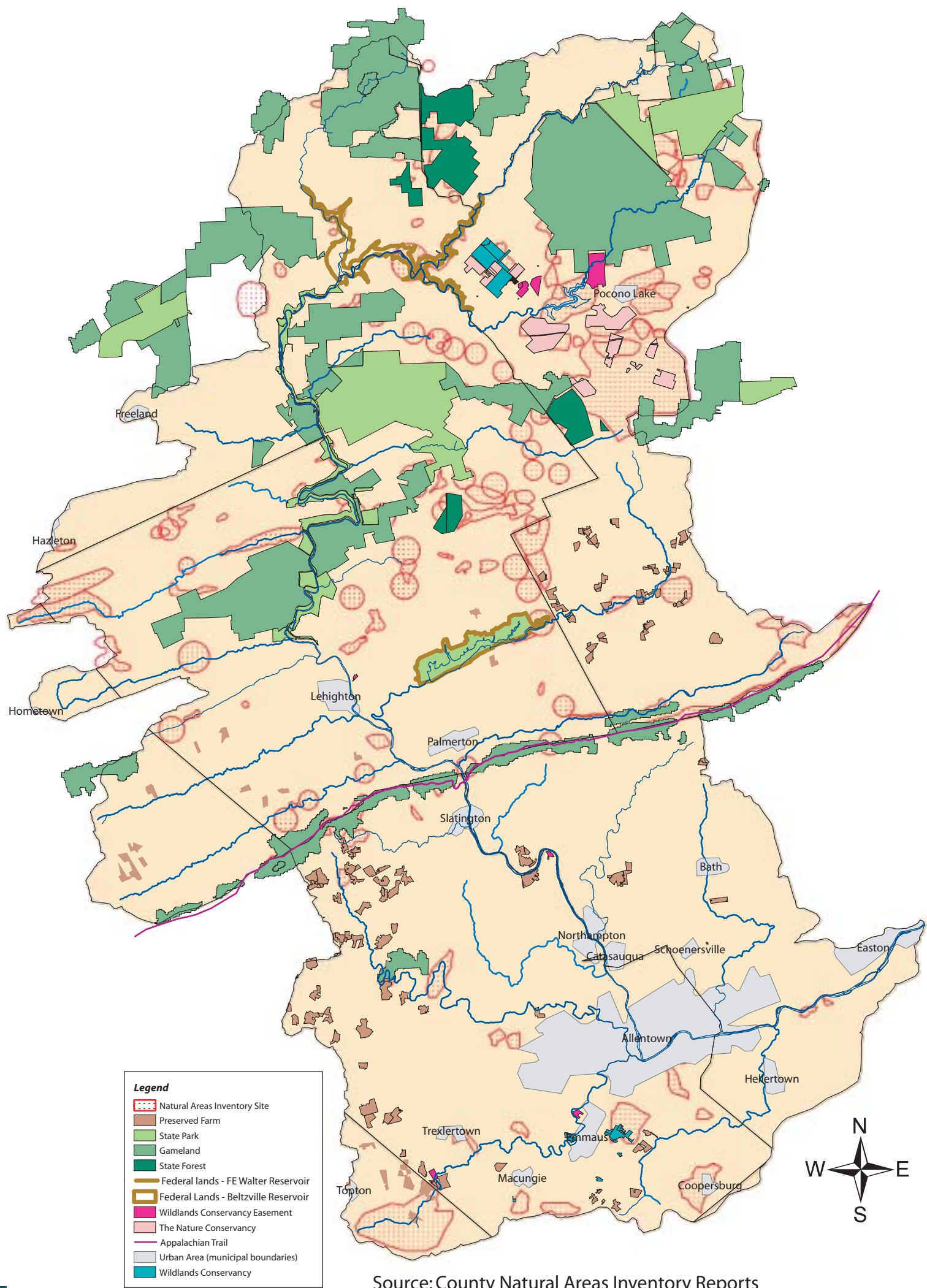
- Legend**
- Unprotected EV Stream Basins
 - Streams
 - Federal Lands - Beltzville Reservoir
 - Appalachian Trail
 - State Park
 - Gamelands
 - State Forest
 - Wildlands Conservancy
 - Wildlands Conservancy Easements
 - Preserved Farms
 - Federal Lands - FE Walter Reservoir
 - (Urban Land (municipal boundary))



MAP 10-3 PRIORITY LANDS FOR PROTECTION – UNPROTECTED WETLANDS LEHIGH RIVER WATERSHED



MAP 10-4 PRIORITY LANDS FOR PROTECTION – UNPROTECTED NATURAL AREAS INVENTORY SITES LEHIGH RIVER WATERSHED

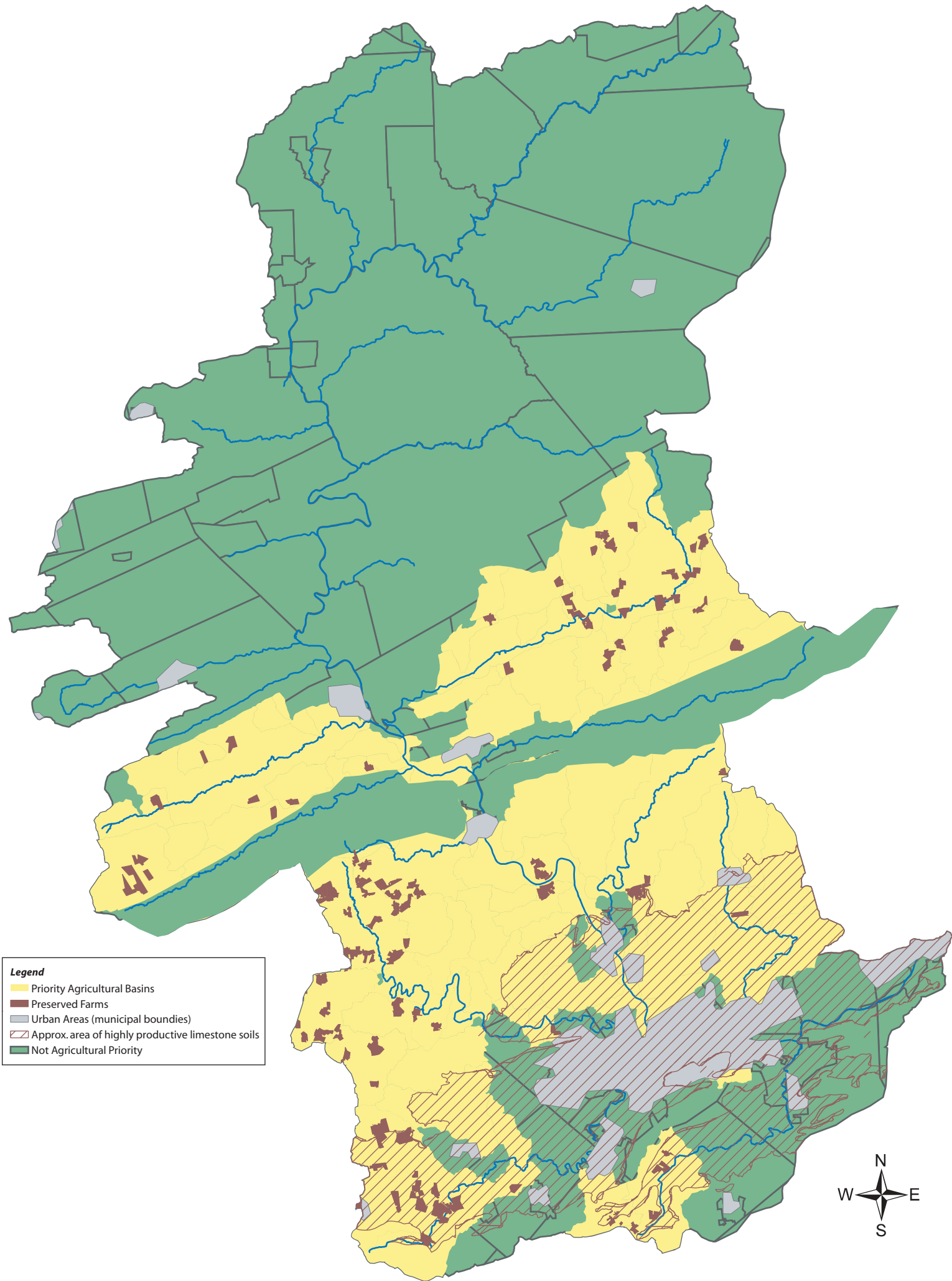


Source: County Natural Areas Inventory Reports
Note: Carbon County field verification of NAIs in progress.

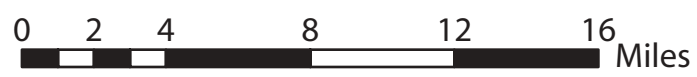
0 1.5 3 6 9 12 Miles



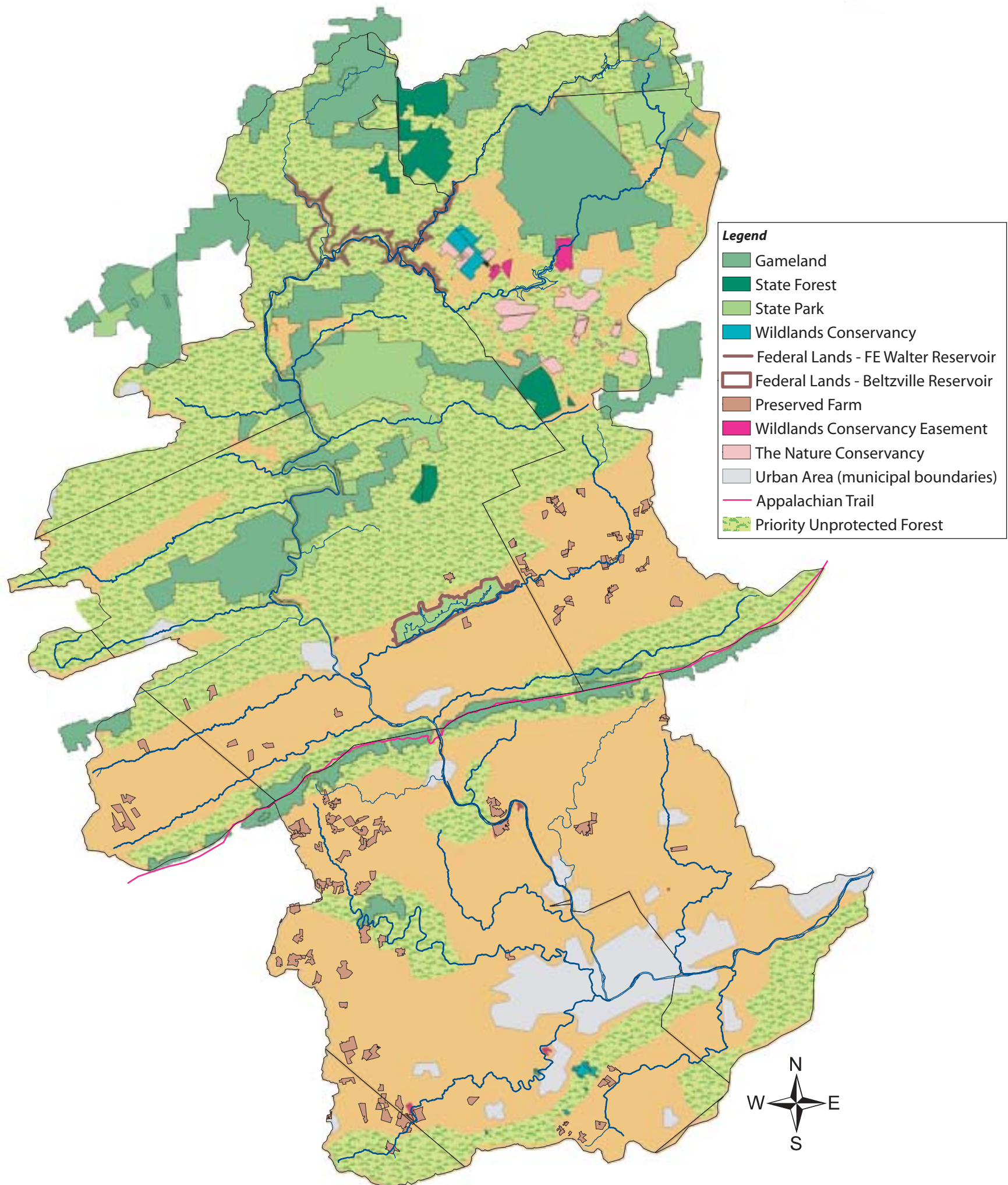
MAP 10-5 PRIORITY LANDS FOR PROTECTION – UNPROTECTED AGRICULTURAL BASINS LEHIGH RIVER WATERSHED



- Legend**
- Priority Agricultural Basins
 - Preserved Farms
 - Urban Areas (municipal boundaries)
 - Approx. area of highly productive limestone soils
 - Not Agricultural Priority



MAP 10-6 PRIORITY LANDS FOR PROTECTION – UNPROTECTED FOREST LANDS LEHIGH RIVER WATERSHED



- Legend**
- Gameland
 - State Forest
 - State Park
 - Wildlands Conservancy
 - Federal Lands - FE Walter Reservoir
 - Federal Lands - Beltzville Reservoir
 - Preserved Farm
 - Wildlands Conservancy Easement
 - The Nature Conservancy
 - Urban Area (municipal boundaries)
 - Appalachian Trail
 - Priority Unprotected Forest

0 2 4 8 12 16 Miles

